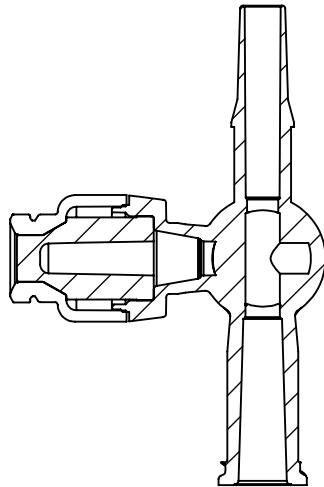
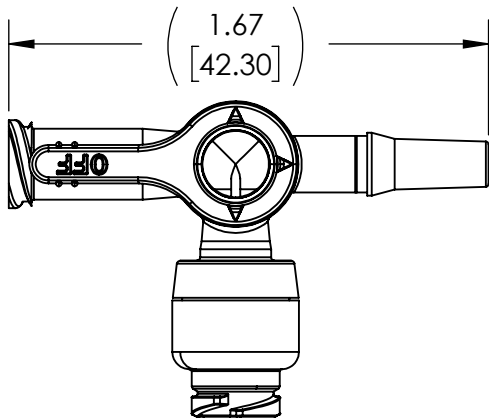
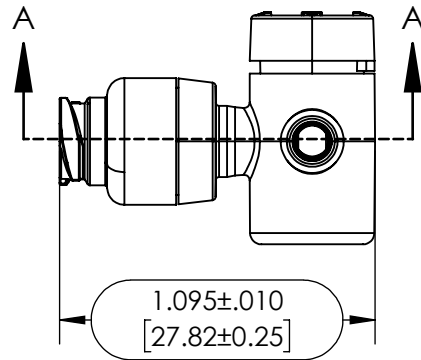
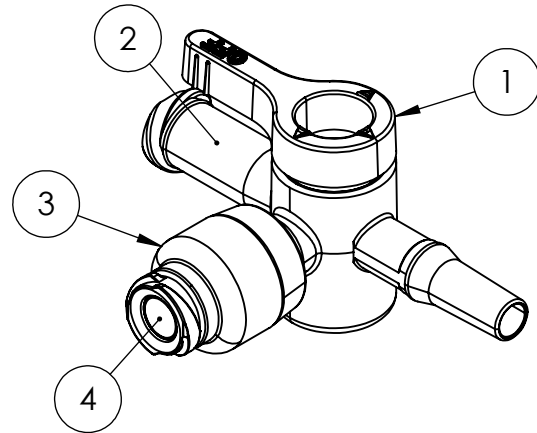
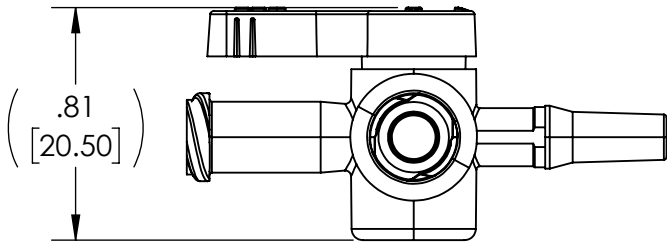


REV	DESCRIPTION (ECO)	DATE	APPROVED
A	NEW RELEASE (ECO 11004)	3/12/21	SR
B	HANDLE ALIGNED WITH FEMALE LUER (ECO 11285)	8/31/21	SR



SECTION A-A



ITEM NO.	DESCRIPTION	MATERIAL
1	PLUG/HANDLE	HDPE MARLES BLUE
2	STOPCOCK BODY	Rx1805451118 PC, CLEAR
3	LUER BODY CAP	Rx1805451118 PC, CLEAR
4	SWABABLE STEM	LR 3003/40 WACKER SILICONE, W/ BLUE COLORANT K-75238

- NOTES:
- SUFFIX "X" INDICATES HANDLE COLOR: B=BLUE
 - FEMALE/MALE LUER COMPATIBLE WITH ISO 80369-7 AND ISO 594-2
 - CRITICAL DIMENSIONS ARE CIRCLED AND SUBJECT TO INSPECTION

MOLDED PARTS:
GATES, PARTING LINES, AND FLASH PER QUALITY CRITERIA

PROPRIETARY AND CONFIDENTIAL
THE INFORMATION CONTAINED IN THIS DRAWING IS SOLE PROPERTY OF HALKEY-ROBERTS CORPORATION ST. PETERSBURG, FL. ANY REPRODUCTION IN PART OR AS A WHOLE WITHOUT THE WRITTEN PERMISSION OF HALKEY-ROBERTS CORPORATION IS PROHIBITED.

DRAWN BY	KS	DATE	02/24/21
APPROVED BY		DATE	
MATERIAL	SEE NOTES		
FINISH			
UNLESS OTHERWISE SPECIFIED: DIMENSIONS ARE IN INCHES [MM] TOLERANCES: ANGULAR: ± 1° TWO PLACE DECIMAL ± .01 THREE PLACE DECIMAL ± .005		THIRD ANGLE PROJECTION	

HR® Halkey-Roberts®

TITLE
Large Bore Stopcock w/o Lock Nut

SIZE
A

SCALE
2:1

DRAWING NO.
C245894024X

REV
B

DO NOT SCALE DRAWING

SHEET
1 OF 1